

The image features a blue-toned background with a perspective view of a multi-lane highway. Several white semi-trucks and a smaller truck are driving away from the viewer. The sky is filled with white clouds. Overlaid on the scene are several white location pin icons connected by thin white lines, suggesting a network or tracking system. A large, semi-transparent white arrow points from the left towards the right, following the curve of the highway. In the top right corner, the logo for KOCH EXPRESS LOGISTICS is displayed. The logo consists of the word 'KOCHEX' in a bold, blue, sans-serif font, with a stylized blue circle containing a white dot above the 'O'. Below 'KOCHEX' is the text 'KOCH EXPRESS LOGISTICS' in a smaller, blue, sans-serif font. On the right side of the image, there is a large, partially visible blue graphic element that looks like a stylized 'S' or a similar shape.

**KOCHEX**<sup>®</sup>  
KOCH EXPRESS LOGISTICS

**FAST**

**RELIABLE**

**HIGH-TECH**

# CONTENTS

## 01 OUR VALES

01-1 High Technology, 01-2 Entrepreneurship, 01-3 Human Appreciation

## 03 MILESTONES

## 04 OVERVIEW

## 05 INTERNATIONAL OPERATIONS

## 06 SERVICES

01 Road Transportation

02 Food Tanker Transportation

03 3rd Country Transit Transportation

04 Temperature-Controlled Transportation

05 Project Transport

## 14 OUR ADVANTAGES

## 15 POLICIES

## 16 GREEN LOGISTICS

## 17 ORGANIZATIONAL CHART

## 18 CERTIFICATES

# CONTENTS

Ensuring 100% customer satisfaction by continuing to be a principled, reliable, and honest company.

Internalizing the rapid, reliable, transparent and constantly developing logistics understanding to become solution partners with customers.

Making sure that our fleet is always consists of young, maintained and environment-friendly vehicles.

## 01-1

### High Technology

We not only invest in technology but also believe that growth is possible through advancing technology. For us, technology does not signify an obligation brought on by change but it is rather a light that illuminates our way. The tailor-made innovative solutions we develop on that luminous path also serves as a source of inspiration for our sector.

## 01-2

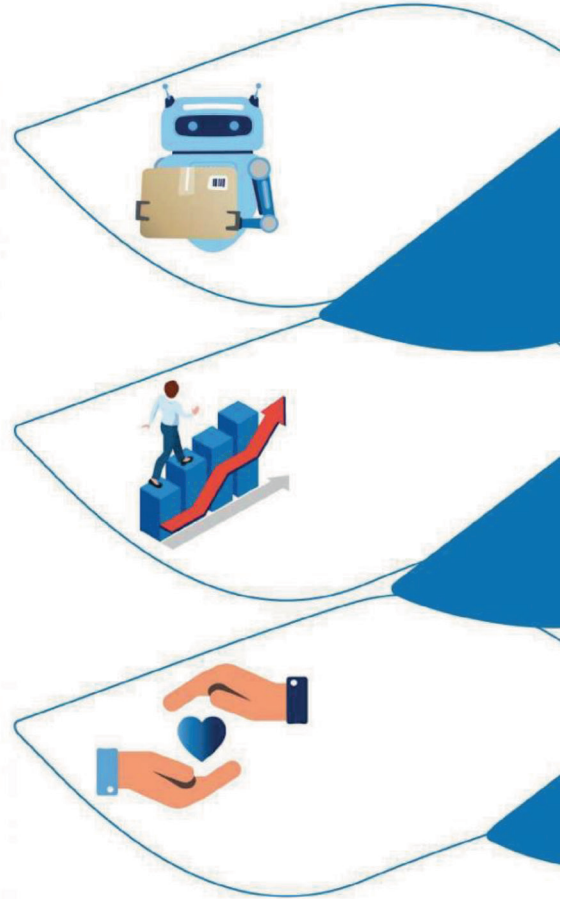
### Entrepreneurship

Our success is grounded in our ability to constantly find new ideas and our investment on creative ideas in every stage of our business process. This may be a brand-new solution, product or service. Our confidence in out-of-the-box perspectives and bold initiatives contributes to our strength as much as it does our customers.

## 01-3

### Human Appreciation

Regardless of whether it is our customer, our colleague or anybody we encounter on the way, for us, human is above all. Humans are the most precious building blocks to create value and reach our goals. In our opinion, sincerity is the golden key to every door, and we are very fortunate to hold that key.



# CONTENTS



ISO Certificates  
Obtained.

2026

Romania office is open  
320+ vehicles  
200+ employes  
Great Place To Work

2025

C2 certificate upgraded  
to L2 certificate  
Georgia office is open

2020

Transportation  
Organizer certificate  
obtained.

2016

Garage Setup

2015

Project  
Transportation  
Launched.

2013

94 vehicles  
47 employes

2012

Food Tanker  
Transportation launched.

2010

3rd country  
Transportation  
Launched.

2002

1998

Establishment  
24 vehicles  
17 employes

7000+

OPERATIONS



320+

VEHICLE FLEET



200+

EMPLOYEES

30 Million+

Km DISTANCE COVERED



**KOCHEX**<sup>®</sup>  
KOCH EXPRESS LOGISTICS

04

# INTERNATIONAL OPERATIONS



# SERVICES



# SERVICES

## ROAD TRANSPORTATION

Based on the understanding that logistics services should be swift, reliable, solution-focused, high-quality and transparent, we provide reciprocal complete and partial transportation between Europe, Asia and the Middle East for loads that require expertise in various industrial fields.



## FOOD TANKER TRANSPORTATION

We provide the international transportation of pureed and liquified foods in this industry, which requires expertise and extra care, with temperature-controlled and pressured custom-made tankers. Tankers are washed in internationally recognized EFTCO-certified washing areas.



## 3RD COUNTRY TRANSIT TRANSPORTATION

We provide 3rd country transit transportation services from all points of Europe, including Azerbaijan and Georgia. Thanks to our vast agency network in relevant countries, we are able to offer quick solutions to likely problems.



**KOCHEX**  
KOCH EXPRESS LOGISTICS

## TEMPERATURE-CONTROLLED TRANSPORTATION

We utilize high technology to transport and monitor fresh chilled and frozen food, chemicals, and all products subject to the cold chain, without compensating their freshness or value in our refrigerated vehicles, specially equipped for the health, food and chemical industry.



## PROJECT TRANSPORTATION

Heavy and high-volume out-of-gauge loads are transported to the required destinations at the desirable time and at ideal costs. Project transportation services are available for tasks requiring engineering and hard-to-reach areas due to geographical position.



# SERVICES

## Road Transportation

Based on the understanding that logistics services should be swift, reliable, solution-focused, high-quality and transparent, we provide reciprocal complete and partial transportation for loads that require expertise in various industrial fields. Hence, we have a long standing as a leader in our own area within the scope of vehicle fleet and service variety.

We provide reciprocal complete and partial transportation between Europe, Asia and the Middle East. The main areas of service provided by our company, which is seeking to further increase the variety of services offered, are as follows:

- Standard complete transportation
- Express service complete transportation
- Project transportation
- Expo transportation
- Liquefied food transportation with food tankers
- Food transportation with temperature-controlled refrigerated vehicles
- ADR service with drivers licensed to transport hazardous and inflammable goods





# SERVICES

## Food Tank Transportation

Food transportation is a task that requires great care, sensitivity and meticulousness. Thanks to its many years of experience, transporting pureed and liquefied food products internationally in temperature-controlled and pressured custom-made tankers, KOCHEX continues to grow in this industry, which requires expertise.

Tankers are washed in internationally recognized EFTCO-certified washing areas.

The products transported include hazelnut spread, tahini, oil, fruit juice, milk, and chocolate sauce.





# SERVICES

## 3rd Country Transit Transportation

We provide CIS countries transit transportation services from all over Europe to Azerbaijan, Georgia and Armenia.

Our long years of experience and background in the industry allows us to present express transit options to our customers. Thanks to our vast agency network in relevant countries, we are able to offer quick solutions to likely problems.





# SERVICES

## Temperature-Controlled Transportation

We utilize high technology to transport and monitor fresh chilled and frozen food, chemicals, and all products subject to the cold chain, without compensating their freshness or value in our refrigerated vehicles, specially equipped for the health, food and chemical industry.



# SERVICES

## Project Transportation

Heavy and high-volume out-of-gauge loads are transported to the required destinations at the desirable time and at ideal costs. Project transportation services are available for tasks requiring engineering and hard-to-reach areas due to geographical position.

Factory setup

Power Plant and Pipeline

Steam and Gas Turbine Transports

Heavy and Out of Gauge Cargo Transportation

Project Solutions and Management



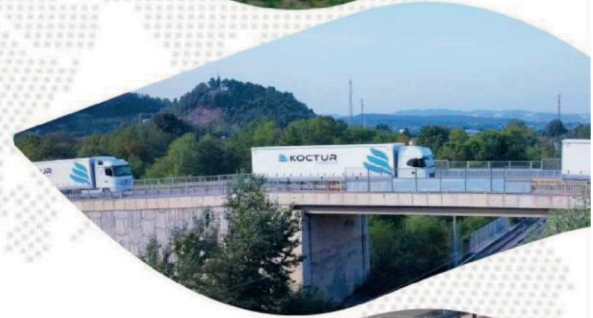
# SERVICES

***FAST***

**RELIABLE**

**LOGISTICS  
NETWORK**

**TECHNOLOGY**

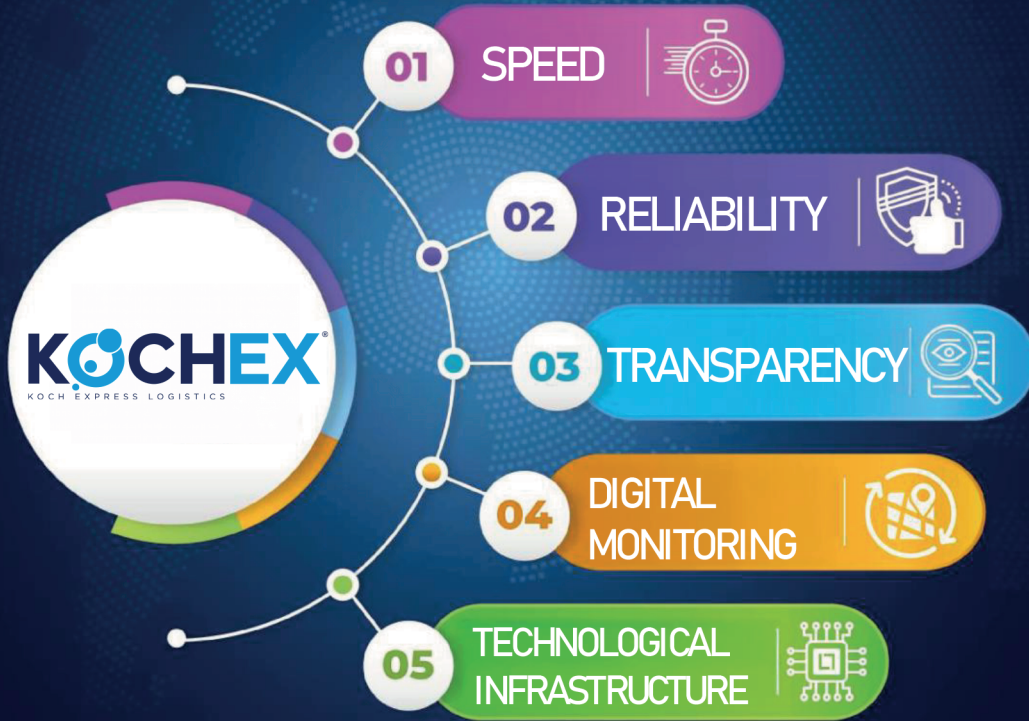


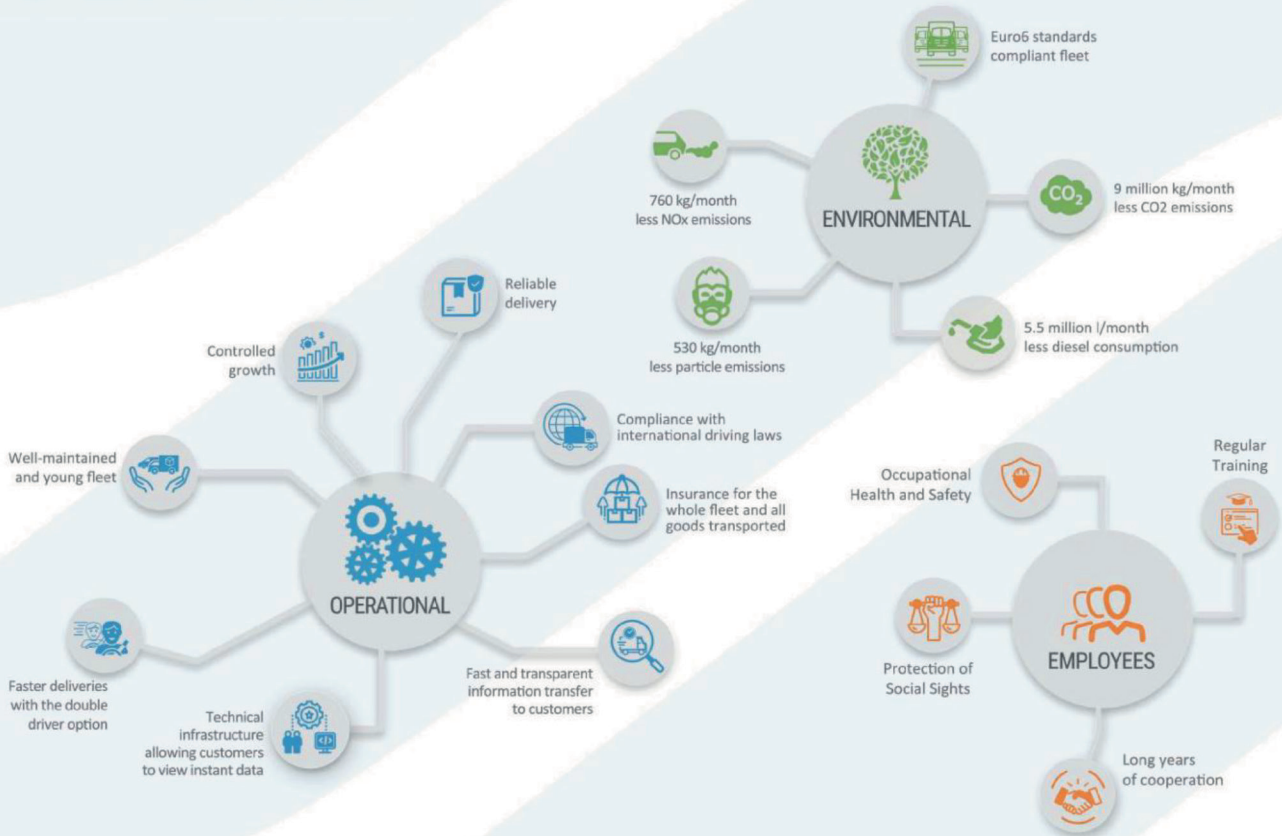
**KOCHEX**<sup>®</sup>

KOCH EXPRESS LOGISTICS

13

# OUR ADVANTAGES





# GREEN LOGISTICS

At KOCHEX, we prioritize environmental sustainability in our transportation processes and actively reduce our carbon footprint through our intermodal transport models. By utilizing rail networks in our operations, we decrease reliance on road traffic, providing logistics solutions that protect nature with significantly lower emission values.

The use of rail reduces carbon emissions by approximately 75% compared to road transport. By a rough calculation, transporting a 20-ton load over 1,000 km by train prevents approximately 1.2 tons of CO<sub>2</sub> from being released into the atmosphere compared to road transport. In this way, with every shipment, we carry not only your cargo but also the future of our world.



**KOCHEX**  
KOCH EXPRESS LOGISTICS

16

# ORGANIZATIONAL CHART





# 02,

## CONTACT US



### Koch Lojistik A.Ş.

Güvercinlik Mh. Mazhar  
Yerebasmaz Cd. No:228 Fatsa/ORDU

+90 555 445 00 52

info@kochex.com

www.kochex.com



### Koch Lojistik A.Ş.

Barbaros Mah. Uphill Court Sitesi  
C2/27 Atasehir Istanbul Türkiye

+90 533 727 80 96

info@kochex.com

www.kochex.com



### Koch Lojistik LLC

Heydar Abashidze Street,  
N 60, 3 Apt: N2, Batumi City, Georgia

+995 595 19 30 00

georgia@kochex.com

www.kochex.com



### Kochex Logistics S.R.L.

Str. Tălmăcelului nr. 1-2, 555700  
Tălmăciu, Sibiu, Romania

+40 786 174 699

romania@kochex.com

www.kochex.com

**KOCHEX**<sup>®</sup>  
KOCH EXPRESS LOGISTICS

www.kochex.com

